

Engineering and Public Services

Eric Dudley, PE
Director

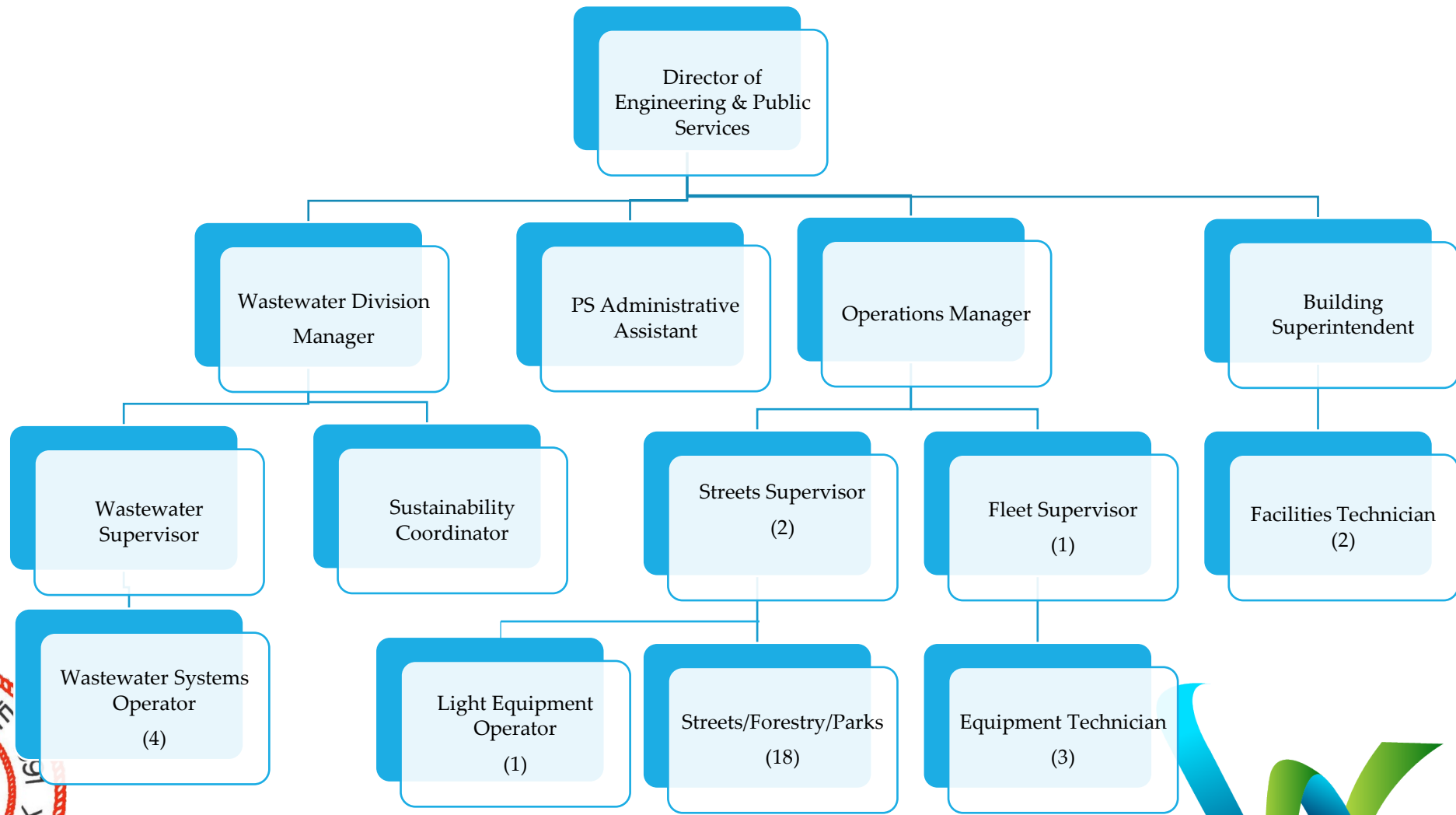


Department Overview

- The Department of Engineering and Public Services is comprised of five divisions overseen by the Administrative Team
 - Streets – 19 FT Equipment Operators, 2 Supervisors and 3 Seasonal
 - Fleet Maintenance – 3 FT Techs w/ 1 Supervisor
 - Wastewater – 4 FT Operators, 1 Supervisor
 - Facilities – 1 FT Building Superintendent and 2 FT Facilities Technicians
 - Admin – 5 FT: Admin Prof., Dir., Ops Mgr, Sustainability Coord., Wastewater Mgr



Organizational Chart



Streets

- Roadways
 - 93 Miles
- Wastewater
 - 67 Miles; 13 Pump Stations
- Stormwater
 - 115 Mile network of catchbasins, pipes and ditches
- Highland Lake Dam
- 6.2 Acres Public Parking



Operations - Streets

- **Maintenance of Roadway Infrastructure**

- Sweeping
- Catch Basin Cleaning
- Lawn and Curbing Repair
- Ditching and Shoulder Work
- Street Signs
- Line Striping
- Roadside Weed Spraying



Operations - Streets (cont)

- **Pavement Preservation**

- Pavement Resurfacing CIP
- Trench Cold Planing and Resurfacing
- Sidewalk Repaving Projects
- ADA Compliance
- Winter Pothole Maintenance
- Street Opening Management and Inspection



Winter Operations Comparison

	No. of Storms	Snowfall Total	Recalls	Snow Hauls	Yards of Snow	Overtime Hours	Overtime Cost	Salt/Sand/Calcium	
Winter 24/25	22	50"	15	19	5,000	2400	\$120,000	2100/400/300	
Winter 23/24	15	36"	8	14	3,000	1500	\$63,000	1300/400/400	



Parks

- **Maintained Parks and Open Space**

- 43 Acres in 35 Locations
- Riverbank Park
- Boardwalk and River Walk
- Bicentennial Park and Ramp Park & Dog Park
- Whitney Rose Garden
- Brown Street Community Garden
- Gazebo Park



Operations – Parks & Open Space

- **Maintenance of Parks and Downtown Open Space**

- Mowing
- Boardwalk and Riverwalk Maintenance
- Mulching
- Weeding
- Pruning
- Utility Work
- Lighting
- Trash Collection
- Tree, Shrub and Flower Planting & Pruning
- Event and Parade Prep, Traffic Control, Trash, Breakdown



Operations – Solid Waste and Recycling

- Curbside Trash and Recycling
 - 7,100 Customers with 3,900 T trash and 1,600 T Recycling Per Year
 - Recycling Rate of 28%
 - Education and Outreach to Schools, Civic Groups, MPTC
 - Bulky Item Curbside Tag System
 - Fall Yard Waste Pickup – Leaves & Brush
 - Household Hazardous Waste Drop-Off



Recycling Challenges

- Reduced demand for recyclables
- Increased costs to haulers to dispose of recyclables
- Average rate of contamination in recyclables – 25%
- Haulers now charging for handling recyclables
 - Average Commodity Rate (ACR): Processing–ACR+Trans
 - ecomaine ACR = **\$95/Ton**
 - ecomaine Contamination Fee =\$55/Ton (21-25% contam)



Operations - Forestry

- 3 Licensed Arborists
- Pruning of Urban Forest
- Tree Planting
- Tree Removals
- **Traffic Signal Maintenance**
- Holiday Lights



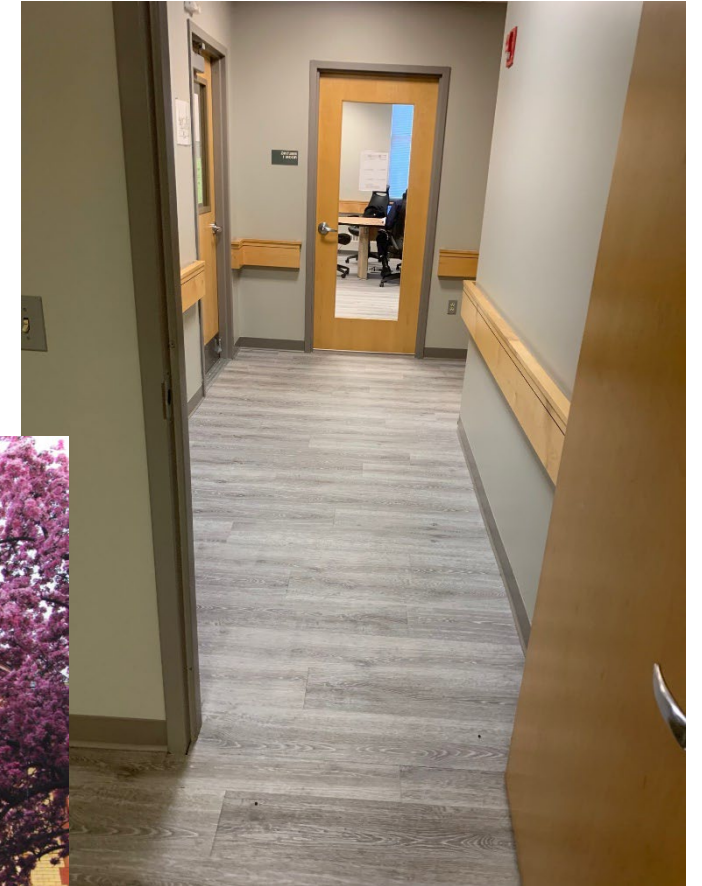
Cemeteries

- Cemeteries – 39 Acres
 - Woodlawn Cemetery
 - Saccarappa Cemetery
 - Highland Lake Cemetery
 - Conant Burying Grounds
 - Larrabee Heights



Facilities

- Public Buildings
 - 10 Major Buildings with Several Satellite Facilities
 - 220,000 Square Feet Total
 - Fred C. Wescott
 - Walker Memorial Library
 - City Hall
 - Public Services
 - Public Safety Building
 - 11 Mechanic Street
 - Parking Garage
 - 13 Reserve Street
 - 15 Hawkes Street



Operations - Facilities

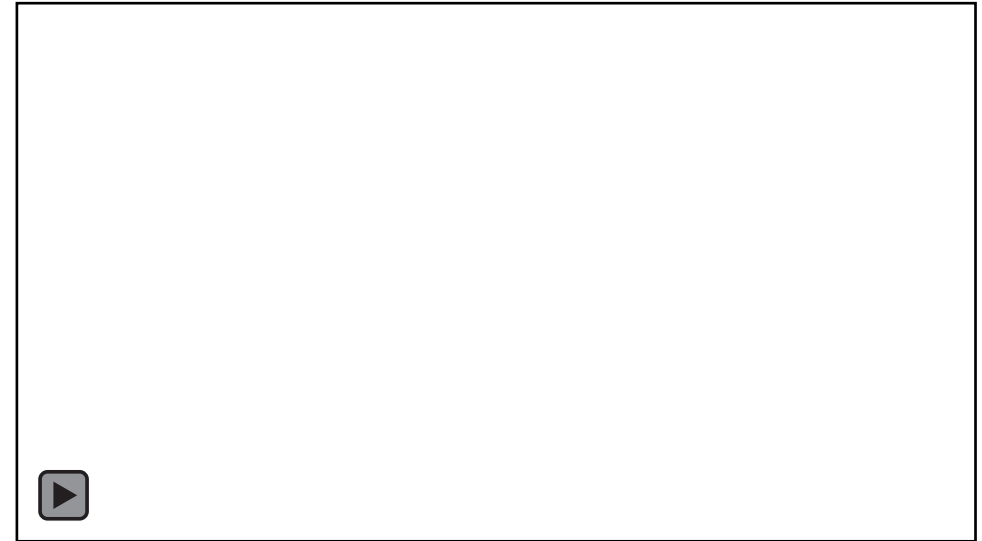
- Maintenance of All Municipal Buildings
- Project Management for Capital Improvements
- Vendor Management
- Custodial Services
- Utility Purchasing
- Bidding/Contract Management



Vehicles and Equipment

- \$7.6 Million Rolling Stock within the Department

- 11 - Single Axle Dump Trucks
- 2 - Dual Axle Dump Trucks
- 8 - 1 Ton Trucks
- 9 - ½ Ton Pickups
- 5 - Wheeled Loaders
- 3 - Excavators
- 2 - Skid Steers
- 4 - Sidewalk Units
- 2 - Bucket Trucks
- 3 - Sweepers
- 1 - Street Snowblower
- 1 - Portable Compressor
- 1 - Leaf Vacuum
- 1 - Fork Truck



Vehicles and Equipment (cont)

- 1- Roadside Emergency Maintenance Truck
- 2 -Vactor Units
- 1 - Wastewater Service Truck
- 3 - Wastewater Pickups
- 1 - Pavement Roller
- 4 - Message Board Signs
- 1 - Wood Chipper
- 1 – Pavement Hot Box
- 1 – Road Grader



Operations - Fleet Maintenance

- Major and Minor Repairs to Municipal Fleet
- Central Fueling – City and School
- Vehicle/Equipment Procurement



Operations - Engineering

- Capital Improvement Program
 - Survey and Design
 - Bidding/Project Management
- Environmental Permitting
 - Combined Sewer Overflow Abatement
 - Municipal Separate Storm Sewer System Program
 - Landfill Closure Monitoring
- Development Review and Inspections



Major Budgetary Changes

- Salaries Increase of \$51,631 Across all Divisions
 - Wage Increases to Meet Market Demand
 - **Elimination of 1 Light Equipment Operator**
- \$6,000 Increase in Consultants Line for Brown Street Culvert Permitting
- \$1,120 Increase in Uniforms (Contractual)
- \$28,317 Increase in Solid Waste and Recycling Collection
- \$31,964 Increase in Solid Waste and Recycling Tipping Fees
- \$9,500 Increase in Electricity Usage



Budgetary Changes (cont.)

- Cemeteries – Mowing Increase \$2,000 (contractual) Supplies Decrease of \$2,000 for flag purchases
- Public Safety Service Contracts Increase \$2,100 for Walk-off Rug Cleaning Service
- Natural Gas Increase \$2,500 at Walker Memorial Library
- Parking Garage Increases
 - Security \$18,214
 - Electricity and Telephone \$9,500



Major Projects

- 2024 Paving
 - Austin, Beechwood, Bell, Emery, Everett, Falmouth, Walker, Woodmont, Arlington, Main
 - Bridgton Road Preliminary Design completed for Congressionally Directed Spending submittal
- 2025 Projects
 - Proposed Paving: Seavey, Mason, Oak, Cottage, Cedar, Elmwood, Gray, Boothby, Hawkes, Lamb, Lawrence
 - Rehabilitation of Lincoln Street with new sidewalk, curbing and storm drain



Questions?

